

YEAR

2016

LINK SMITHFIELD (from POK FU LAM RD to LUNG WAH ST)

COVERAGE (B) STATION

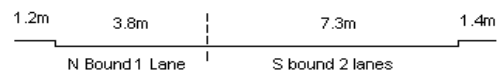
2407

ROAD NETWORK

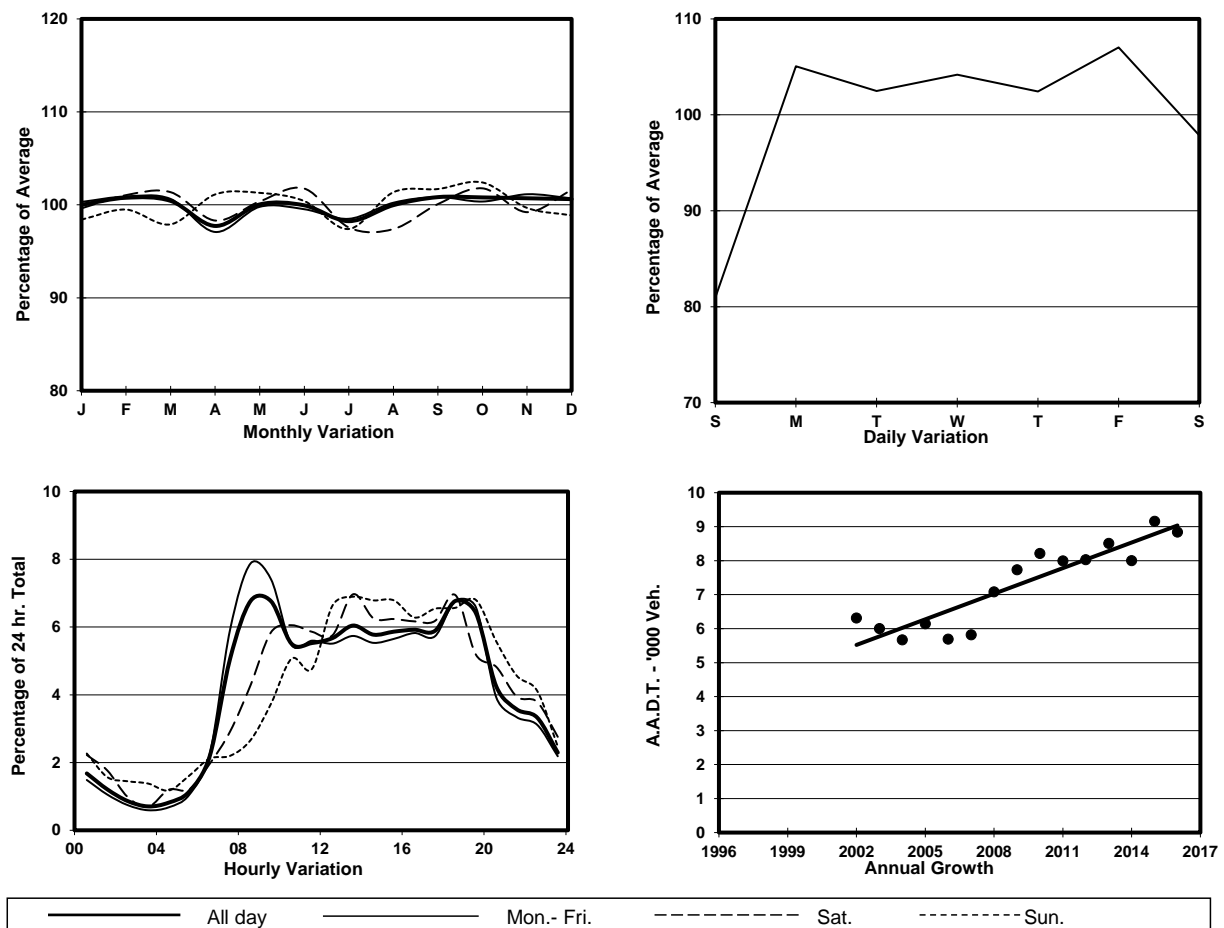
MINOR

ROAD TYPE

DISTRICT DISTRIBUTOR



1. TRAFFIC FLOW VARIATION AND GROWTH



2. TRAFFIC CHARACTERISTICS (BY DIRECTION)

Parameter	All - Day	Mon. - Fri.	Sat.	Sun.
SOUTH BOUND				
A.A.D.T.	6920	7360	6740	5430
R 12 / 24 - %	72.5	74.1	70.3	65.2
R 16 / 24 - %	89.6	90.5	87.6	86.5
AM Peak Hour	0900-1000	0900-1000	0900-1000	0900-1000
One-way flow at AM peak hour	510	590	410	200
T - % (AM)	-	8.7	-	-
PM Peak Hour	1800-1900	1800-1900	1800-1900	1700-1800
One-way flow at PM peak hour	470	500	490	380
T - % (PM)	-	3.5	-	-
Prop.of commercial vehicles - 16 hr.	-	3.9	-	-
NORTH BOUND				
A.A.D.T.	1920	1950	1990	1800
R 12 / 24 - %	68	69.1	66.6	64.1
R 16 / 24 - %	87.3	88.2	85.8	84.3
AM Peak Hour	0800-0900	0800-0900	0900-1000	0900-1000
One-way flow at AM peak hour	130	160	110	70
T - % (AM)	-	10.5	-	-
PM Peak Hour	1800-1900	1800-1900	1800-1900	1800-1900
One-way flow at PM peak hour	130	130	120	140
T - % (PM)	-	6	-	-
Prop.of commercial vehicles - 16 hr.	-	4.4	-	-

3. OTHER INFORMATION AND COMMENT

4. Vehicle classification and occupancy - Monday to Friday

Time		Class of vehicle									
		Motor	Private	Taxi	Private	PLB	Goods veh.		Non	Fr. Bus	
		Cycle	Car		LB		Light	M & H	Fr. Bus	SD	DD
0700-0800	Pro	5.6	21.8	36.3	2.4	8.9	18.5	0.8	5.6	0.0	0.0
	Ocp	1.0	1.1	2.0	2.0	14.4	1.7	1.0	18.1	0.0	0.0
0800-0900 Peak hour	Pro	2.6	48.7	22.9	3.7	4.4	11.1	1.8	4.8	0.0	0.0
	Ocp	1.0	1.4	2.0	4.2	13.5	1.8	2.2	9.5	0.0	0.0
0900-1000	Pro	1.5	35.4	23.3	2.9	4.4	23.8	2.9	5.8	0.0	0.0
	Ocp	1.0	1.6	2.2	3.5	13.9	2.0	2.0	7.2	0.0	0.0
1000-1100	Pro	2.2	42.8	19.6	0.0	6.5	26.1	0.0	2.9	0.0	0.0
	Ocp	1.0	1.5	2.2	0.0	8.8	1.8	0.0	7.8	0.0	0.0
1100-1200	Pro	2.6	38.8	28.4	2.6	5.2	21.6	0.9	0.0	0.0	0.0
	Ocp	1.3	1.4	2.2	1.7	13.8	1.4	2.0	0.0	0.0	0.0
1200-1300	Pro	4.3	33.0	30.4	5.2	7.0	14.8	3.5	1.7	0.0	0.0
	Ocp	1.0	1.5	2.2	4.2	11.4	1.5	2.0	2.5	0.0	0.0
1300-1400	Pro	3.5	33.1	32.6	2.9	5.8	19.2	1.7	1.2	0.0	0.0
	Ocp	1.3	1.4	2.4	3.4	10.4	1.9	3.0	1.0	0.0	0.0
1400-1500	Pro	4.4	37.1	20.8	0.0	6.3	29.6	1.3	0.6	0.0	0.0
	Ocp	1.0	1.7	2.4	0.0	11.4	1.6	1.0	1.0	0.0	0.0
1500-1600	Pro	4.5	45.8	21.4	4.0	5.5	17.9	1.0	0.0	0.0	0.0
	Ocp	1.1	1.6	1.9	3.1	7.6	1.6	2.5	0.0	0.0	0.0
1600-1700	Pro	3.6	35.3	26.6	3.6	7.9	19.4	0.7	2.9	0.0	0.0
	Ocp	1.2	1.4	2.1	4.8	11.1	1.6	1.0	8.3	0.0	0.0
1700-1800	Pro	2.7	36.9	31.5	2.7	10.1	10.7	2.0	3.4	0.0	0.0
	Ocp	1.0	1.3	2.3	4.5	12.1	1.6	2.3	6.8	0.0	0.0
1800-1900	Pro	6.3	52.4	25.7	0.0	8.4	3.1	1.6	2.6	0.0	0.0
	Ocp	1.3	1.5	2.4	0.0	13.6	1.8	1.3	2.0	0.0	0.0
1900-2000	Pro	4.2	57.0	19.4	0.0	9.7	5.5	0.0	4.2	0.0	0.0
	Ocp	1.1	1.5	2.2	0.0	10.4	1.9	0.0	5.6	0.0	0.0
2000-2100	Pro	6.1	49.2	27.3	0.8	10.6	4.5	0.0	1.5	0.0	0.0
	Ocp	1.1	1.5	2.1	2.0	5.9	1.8	0.0	2.5	0.0	0.0
2100-2200	Pro	2.2	39.6	44.0	0.0	6.6	5.5	0.0	2.2	0.0	0.0
	Ocp	1.0	1.5	2.2	0.0	5.7	1.2	0.0	3.0	0.0	0.0
2200-2300	Pro	4.1	54.8	34.2	0.0	2.7	2.7	0.0	1.4	0.0	0.0
	Ocp	1.3	1.6	2.4	0.0	1.0	2.0	0.0	1.0	0.0	0.0
16 hours	Pro	3.7	41.8	26.5	2.1	6.8	15.0	1.3	2.7	0.0	0.0
	Ocp	1.1	1.5	2.2	3.6	10.9	1.7	2.0	7.5	0.0	0.0

Legend

Pro. Proportion of vehicles in % (Sum may not add up to 100% due to figure rounding)*

Ocp. Average occupancy of vehicles including both driver and passengers*

M&H Medium and Heavy

***** All traffic data are collected from combined bounds except for one way traffic